

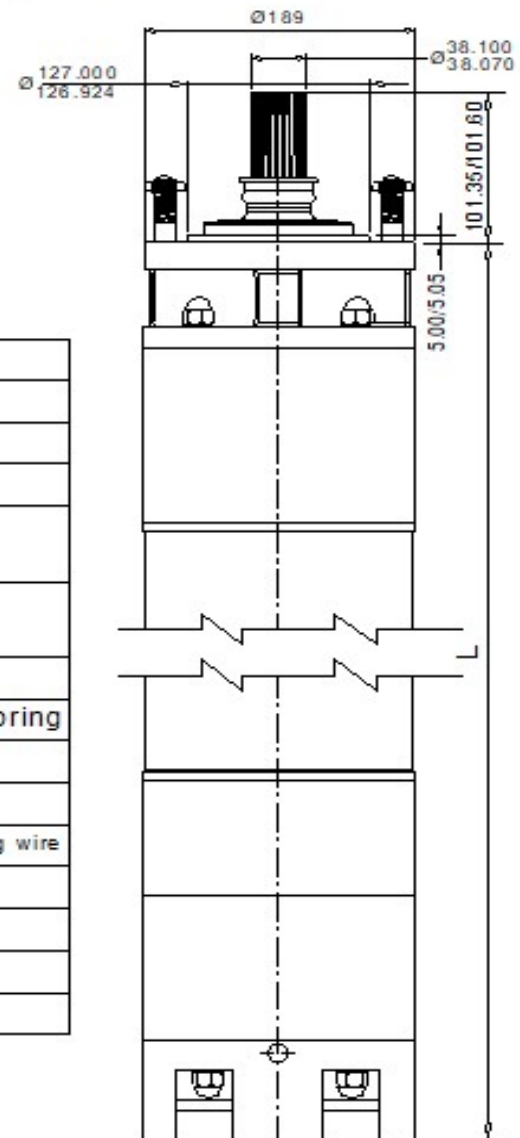
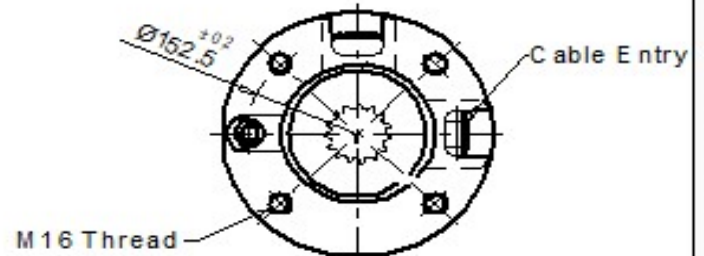
# 8" water filled rewindable motors

## Dimensions and Weights :

### ***DIMENSIONS AND WEIGHTS***

THREE-PHASE MOTORS 50Hz

P2		L	Weight
kW	HP	mm	Kg
11.0	15.0	850	115
15.0	20.0	915	125
18.5	25.0	930	135
22.0	30.0	960	150



### ***MATERIAL SPECIFICATIONS***

Component	Material
Motor Shell	Stainless Steel
Sand Guard	CR (Neoprene)
Stud	AISI 304
Upper Bearing Housing (Upper Side)	Cast Iron
Upper Bearing Housing (lower Side)	Cast Iron
Mechanical Seal	Ceramic / Carbon
Oil Seal	CR (Neoprene) with S.S.Spring
Shaft	AISI 431
Rotor	Copper
Winding	Polyester wrapped copper winding wire
Lower Bearing housing	Cast Iron
Thrust Bearing housing	Cast Iron
Diaphragm Rubber	CR (Neoprene)
Diaphragm Plate	Cast Iron

**NOTE >**

ALL DIMENSIONS ARE IN mm.

SPECIFICATIONS SUBJECT TO CHANGE DUE TO CONTINUOUS IMPROVEMENT.