

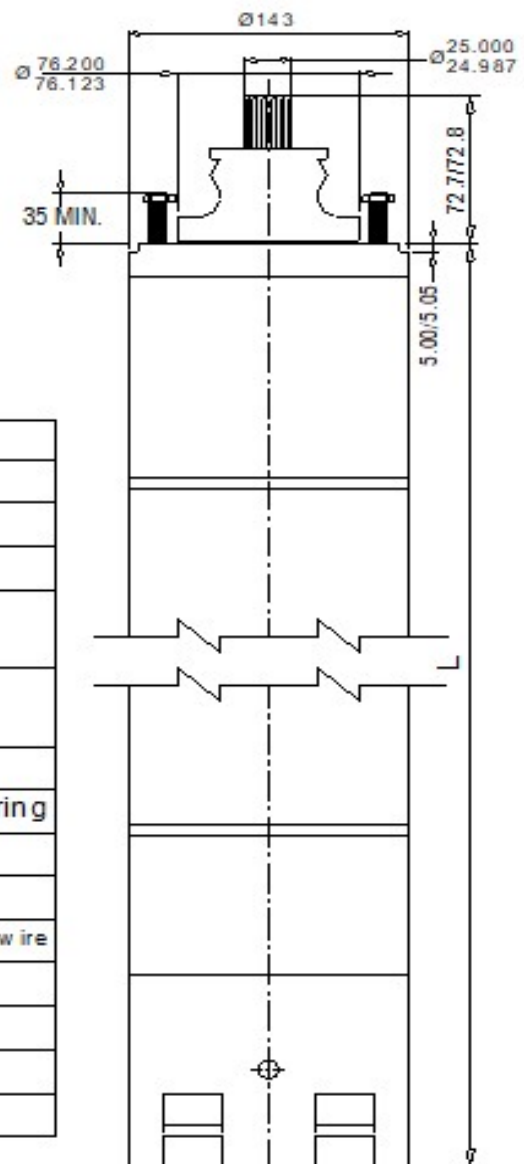
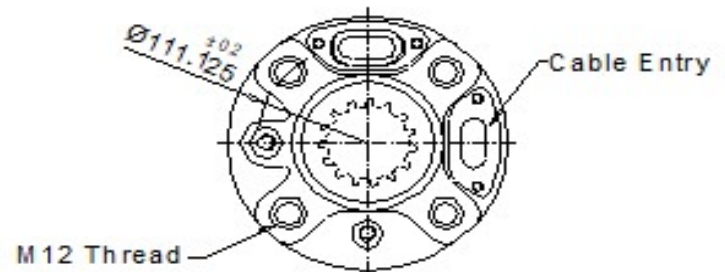
6" water filled rewindable motors

Dimensions and Weights : CI MOTOR

DIMENSIONS AND WEIGHTS

THREE-PHASE MOTORS 50Hz

P2		L	Weight
kW	HP	mm	Kg
1.5	2.0	507	30
2.2	3.0	527	34
3.0	4.0	547	37
3.7	5.0	567	40
4.5	6.0	587	43
5.5	7.5	612	48
7.5	10.0	637	51
9.3	12.5	687	59
11.0	15.0	737	63
13.0	17.5	818	71
15.0	20.0	868	76
18.5	25.0	893	80
22.0	30.0	943	85
26.0	35.0	1009	96
30.0	40.0	1059	103



MATERIAL SPECIFICATIONS

Component	Material
Motor Shell	Stainless Steel
Sand Guard	CR (Neoprene)
Stud	AISI 304
Upper Bearing Housing (Upper Side)	Cast Iron
Upper Bearing Housing (lower Side)	Cast Iron
Mechanical Seal	Ceramic / Carbon
Oil Seal	CR (Neoprene) with S.S.Spring
Shaft	AISI 431
Rotor	Copper
Winding	Polyester wrapped copper winding wire
Lower Bearing housing	Cast Iron
Thrust Bearing housing	Cast Iron
Diaphragm Rubber	CR (Neoprene)
Diaphragm Plate	Cast Iron

NOTE ->
ALL DIMENSIONS ARE IN mm.
SPECIFICATIONS SUBJECT TO CHANGE DUE TO CONTINUOUS IMPROVEMENT.