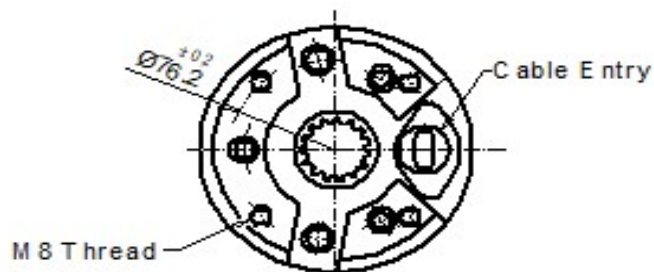


4" water filled rewindable motors

Dimensions and Weights : FULL STAINLESS STEEL TUBE MOTOR

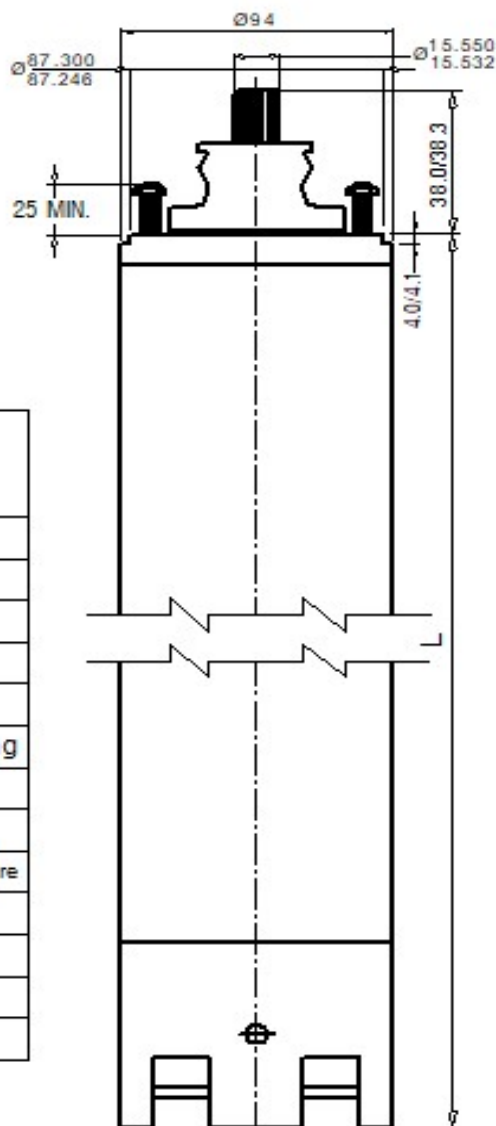
SINGLE-PHASE MOTORS 50Hz

P2		L	Weight
kW	HP	mm	Kg
0.37	0.5	447.5	16.0
0.55	0.75	467.5	17.0
0.75	1.0	492.5	18.0
1.1	1.5	577.5	22.0
1.5	2.0	627.5	25.5
2.2	3.0	697.5	28.0



THREE-PHASE MOTORS 50Hz

P2		L	Weight	P2		L	Weight
kW	HP	mm	Kg	kW	HP	mm	Kg
0.37	0.5	447.5	16.0	2.2	3.0	647.5	27.0
0.55	0.75	467.5	17.0	3.0	4.0	697.5	28.5
0.75	1.0	492.5	18.0	3.7	5.0	727.5	29.0
1.1	1.5	577.5	22.0	4.5	6.0	777.0	31.0
1.5	2.0	577.5	23.0	5.5	7.5	827.5	33.0



MATERIAL SPECIFICATIONS

Component	Material
Motor Shell	Stainless Steel
Sand Guard	CR (Neoprene)
Stud	AISI 304
Upper Bearing Housing	Cast Iron*
Mechanical Seal	Ceramic / Carbon
Oil Seal	CR (Neoprene) with S.S. Spring
Shaft	AISI 431
Rotor	Copper
Winding	Polyester wrapped copper winding wire
Lower Bearing housing	Cast Iron
Thrust Bearing housing	Cast Iron*
Diaphragm Rubber	CR (Neoprene)
Diaphragm Plate	Stainless Steel

*Stainless steel components are available on request

NOTE >

ALL DIMENSIONS ARE IN mm.

SPECIFICATIONS SUBJECT TO CHANGE DUE TO CONTINUOUS IMPROVEMENT.